



# Iowa Department of Human Services

Terry E. Branstad  
Governor

Kim Reynolds  
Lt. Governor

Charles M. Palmer  
Director

**To: The Governor’s Advisory Council on Brain Injuries**  
**From: DHS, IME, LeAnn Moskowitz, Brain Injury Waiver Program Manager**  
**Re: Brain Injury Waiver and General Medicaid Quarterly Update October 2013**

## I. Brain Injury Waiver Wait List as of 10/28/2013

Waiver	Total Slots	Currently Enrolled (ISIS)	In process	On Wait List	Next App. Date
Brain Injury (Oct-Sept)	1339	1274	108	808	4/2/2012 18 months
Reserved Capacity	30	13	4	0	N/A

## I. BI Waiver Expenditures

### Monthly Expenditure Comparison September 2012 and September 2013

Month to date comparison	Recip.	Claims	Units	Total Pmt	Avg. Unit Cost	Avg Elig Cost	Avg Unit Recip	Avg Cost Recip
09/30/2012	1,203	2,530	57,219	\$2,316,164.09	\$40.48	\$4.58	47.6	\$1,925.32
09/30/2013	1,232	2,851	211,228	\$3,045,903.01	\$14.42	\$5.92	171.5	\$2,472.32
Difference	29 2.4%	321 12.7%	154,009 269%	729,738.92 31.51%				

Source Medicaid B-1 Monthly Report of Expenditures <http://publications.iowa.gov>

The increase in average per unit cost and per member cost can be attributed to the 2% rate increase HCBS waiver providers received January 1, 2013 and the lifting of executive order 19 which allowed fee based service providers to increase their rates.

### Year to Date Expenditure Comparison September 2012 and September 2013

SFY to date comparison	Recip.	Claims	Units	Total Pmt
09/30/2012	1,289	7,874	173,801	\$7,057,822.78
09/30/2013	1,299	7,866	425,445	\$7,924,232.06
Difference	10 >1%	8 1%	251,644 69%	\$8966,409.29 12.27%

[http://www.dhs.state.ia.us/Partners/Reports/PeriodicReports/Medicaid\\_B1/MedicaidB1Current.html](http://www.dhs.state.ia.us/Partners/Reports/PeriodicReports/Medicaid_B1/MedicaidB1Current.html)

## II. BI Waiver Demographics

- See attached

## III. BI Waiver Utilization for 9/30/2013

- See attached

#### IV. BI Waiver Level of Care

Persons who qualify for the BI waiver have sustained a traumatic brain injury and meet intermediate care facility, skilled nursing facility, or intermediate care facility for the intellectually disabled level of care.

SFY 2014	1 <sup>st</sup> Quarter	2nd Quarter	3rd Quarter	4th Quarter	Year to Date
<b>Admission LOC</b>	<b>20</b>				<b>20</b>
Approvals	16 80%				16 80%
Denials	4 20%				4 20%
<b>Annual LOC</b>	<b>311</b>				<b>311</b>
Approvals	309 99%				309 99%
Denials	2 1%				2 1%

#### V. BI Waiver Appeals

Members are provided appeal rights with every adverse decision

SFY 2014	1 <sup>st</sup> Quarter	2nd Quarter	3rd Quarter	4th Quarter	Year to Date
<b>Number of Appeals</b>	<b>0</b>				<b>0</b>

#### VI. BI Waiver Service Plan Authorization

Service plans for adult members on the Brain Injury waiver are completed when there is an increase in service unit amounts, service costs, or number of services to evaluate and confirm the medical need for the change in service level

SFY 2014	1 <sup>st</sup> Quarter	2nd Quarter	3rd Quarter	4th Quarter	Year to Date
<b>Approvals</b>	<b>201 83%</b>				<b>201 83%</b>
<b>Modifications</b>	<b>40 17%</b>				<b>40 17%</b>
<b>Denials</b>	<b>0 0%</b>				<b>0 0%</b>

#### VII. BI Waiver News

##### Web Enabled Training

Progress, IME has signed off on receipt of the product, minor revisions and testing have occurred, to be loaded to platform during November with full user access in December 2013

##### BI Waiver 1915(c) application amendments (CMS Approval Received)

##### BI Waiver IAC Chapter 83 revisions (TBD- Rules remain with the Attorney General's staff for review)

- Removal of the upper age limit – Members will be able to continue to receive services through the BI Waiver after age 65
- Removal of the cost of BI Waiver Case Management (W0815) from the monthly service cost cap of \$2,895.00 \_ Members will have more dollars to spend on direct services
- Removal of the cost of Home and Vehicle Modifications from the monthly cap- Members will have more dollars to spend on direct services, Case Managers won't have to remember to encumber a portion of HVM costs each month

##### BI Waiver Level of Care Assessment Workgroup

- This group is not meeting at this time as the standardized assessment tool is part of the Balancing Incentive Payment Program (BIPP) RFP. The work completed by the workgroup will inform the process.

<http://www.ime.state.ia.us/Providers/BIPP.html>

### **Community Based Neurobehavioral Rehabilitation Services Task Force**

- Currently two providers operating through an exception to policy; Community NeuroRehab in Des Moines and NeuroRestorative Iowa in Iowa City.
- The IME is currently working on the reimbursement methodology rules.
- The most current draft of the rules

## **VIII. HCBS Communication from IME**

<http://www.ime.state.ia.us/Providers/Bulletins/Bulletins2013.html>

### **INFORMATIONAL LETTER NO.1265**

HCBS Rate Changes Effective July 1, 2013

### **INFORMATIONAL LETTER NO.1267**

Change in Case Management Reimbursement Rate Methodology

### **INFORMATIONAL LETTER NO.1273**

Rule Changes to add Coverage of Several Items and a New Prior Authorization (PA)

Bath/shower chairs, non-standard patient lifters, power wheelchair attendant control, a secondary ventilator

### **INFORMATIONAL LETTER NO.1285**

Notice of termination, Consumer Directed Attendant Care Services (CDAC) Rules in ARRC 0883C

### **INFORMATIONAL LETTER NO.1295**

2013 HCBS Provider Quality Management Self-Assessment

## **IX. General Information**

### **• The Iowa Health and Wellness Plan**

Beginning January 1, 2014, the Iowa Health and Wellness Plan will cover all Iowans age 19-64 with income up to and including 133 percent of the Federal Poverty Level.

<http://www.ime.state.ia.us/iowa-health-and-wellness-plan.html>

### **• The DHS Budget Submission for SFY 2014 and 2015 may be found here:**

<http://www.dhs.state.ia.us/Partners/Reports/BudgetReports/Budgets.html>

### **• See the Medicaid Newsletter for all the latest news from the IME**

<http://www.ime.state.ia.us/newsletter.html#search='Medicaid%20newsletter>

### **• DHS Initiatives**

<http://www.ime.state.ia.us/Initiatives.html>

- Medicaid Value Management Data
- State Innovation Models (SIM)
- Balancing Incentive Payment Program (BIPP)
- Health Home
- Health Information Technology
- ICD-10
- Affordable Care Act

X.

**DHS Employment Initiatives**

- DHS Employment Service Redesign workgroup has met since July. All Employment Service Redesign reports, documents, webinars and workgroup activities can be found at:  
<http://www.dhs.state.ia.us/mhdd/2012/Employment.html>

**Brain Injury Waiver Services  
SFY 2013**

**Total Expenditures  
\$ 30,362,842**

**Total Members Served  
1390**

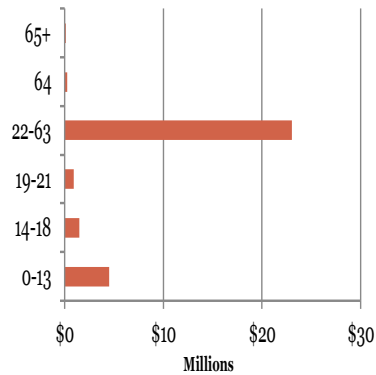
**Total # Claims  
32,151**

**Average Expenditure /  
Member  
\$ 21,844**

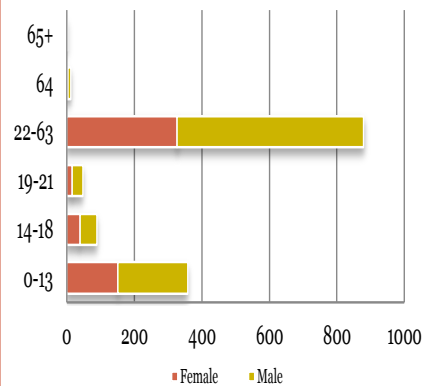
**Average Expenditure /  
Claim  
\$944**

**Average Waiver Days from  
Application Date thru 1<sup>st</sup> Paid  
Date:  
201 days**

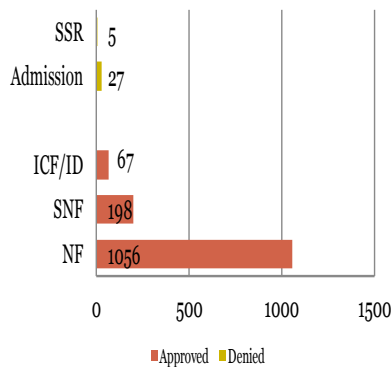
**Expenditures**



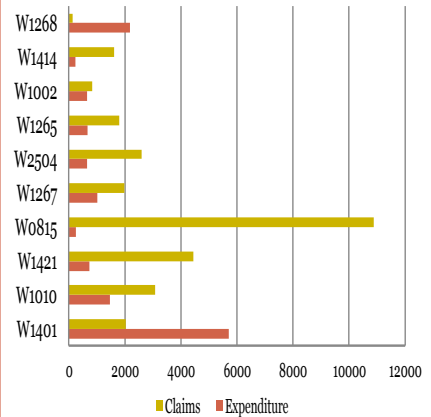
**Age - Gender**



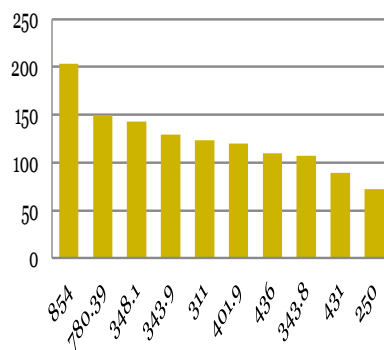
**Level of Care**



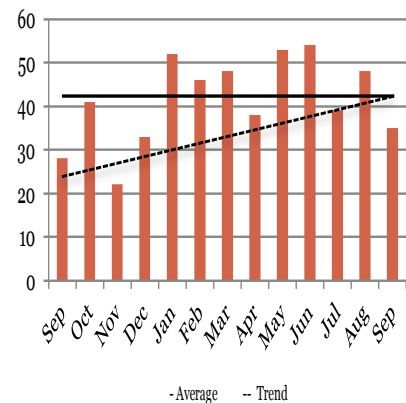
**Service Codes - Avg. Expenditure**



**Top 10 Diagnosis**



**Incidents - 13 mo.**



Data Source: All Paid Claims Oct 2013

<b>250</b>	Diabetes mellitus without mention of complication, type II or unspecified
<b>311</b>	Depressive Disorder NOS
<b>343.8</b>	Other specified infantile cerebral palsy
<b>343.9</b>	Infantile cerebral palsy, unspecified
<b>348.1</b>	Anoxic brain damage
<b>401.9</b>	Unspecified essential hypertension
<b>431</b>	Intracerebral hemorrhage
<b>436</b>	Acute, but ill-defined, cerebrovascular disease
<b>780.39</b>	Other convulsions
<b>854</b>	Intracranial injury of other and unspecified nature without mention of open

**BI Waiver Service Utilization 7/1/2013 – 9/30/2013**

**Total consumers eligible for Brain Injury = 1305**

<b>Program</b>	<b>Service</b>	<b># of Consumers</b>
Brain Injury	H2015 Comp Community Support - home based hab or SCL (15 min)	412
Brain Injury	H2016 Comp Comm Support - home based hab or SCL (Daily)	176
Brain Injury	H2019 Therapeutic Bhv Srvs - enhanced job search	2
Brain Injury	H2021 Comm-Based Wrap-Around - family counseling	18
Brain Injury	H2023 Supported Employment - - enclave	23
Brain Injury	H2024 UC Supported Employment - employer development	1
Brain Injury	H2025 Support to Maintain Employment -	57
Brain Injury	S0215 Non-Emergency Transportation per Mile	141
Brain Injury	S5101 Adult Day Care Services - 1/2 Day	31
Brain Injury	S5102 Adult Day Care Services- full day	74
Brain Injury	S5105 Adult Day Care- extended day	3
Brain Injury	S5125 Attendant Care Services - Agency non-skilled	146
Brain Injury	S5125 - U3 Attendant Care Services - Agency skilled	2
Brain Injury	S5150 - U3 Respite Care - specialized	40
Brain Injury	S5150 - UC Respite Care - individual basic, home care agency	271
Brain Injury	S5150 Unskilled Respite Care - basic individual	62
Brain Injury	S5160 Emergency Response System, Install and Test	12
Brain Injury	S5161 Emergency Response System - Monthly Fee	152
Brain Injury	S5165 Home Modification	8
Brain Injury	T1002 RN Services - IMMT	2
Brain Injury	T1003 LPN/LVN Services-IMMT	4
Brain Injury	T1004 - U3 Nursing/Home Health Aide- IMMT, SCL & chld care	3

Brain Injury	T1004 Nursing/Home Health Aide- IMMT, HH agency	3
Brain Injury	T1005 Respite Care Services - group	65
Brain Injury	T1005 Respite Care Services - facility	3
Brain Injury	T1016 Case Management	914
Brain Injury	T1019 Personal Care Services - CDAC individual non-skilled	152
Brain Injury	T1019 Personal Care Services - CDAC individual skilled	7
Brain Injury	T2003 Non-Emergency Transportation per Trip (One Way)	87
Brain Injury	T2014 Habilitation, Prevocational per Diem	40
Brain Injury	T2015 Habilitation, Prevocational per Hour	26
Brain Injury	T2018 Hab, Supp Emp- - job development	9
Brain Injury	T2025 Waiver Services NOS- FMS payment	269
Brain Injury	T2029 Specialized Medical Equipment NOS	8
Brain Injury	T2036 Therapy Camping Overnight	8
Brain Injury	T2037 Therapy Camping per Day	7
Brain Injury	T2039 Vehicle Modification	1
Brain Injury	W0815 Case Management BI Waiver	9
Brain Injury	W1010 Consumer Choices Option	4
Brain Injury	W1265 CDAC-Agency (Hourly)	1
Brain Injury	W1421 Supported Community Living (Hourly)	2
Brain Injury	W1431 Supported Employment, maintain employment/job coaching	1
Brain Injury	W2501 Respite-HHA basic individual	1
Brain Injury	W2521 Respite Resident Camp - Weeklong overnight recreational respite	1
Brain Injury	W5019 Supported Employment - Job Development	1

**BI Waiver Services not authorized during the first quarter include:**

96153 Behavioral Health Intervention

H0031 Mental Health Assessment, Behavioral Programming

H0032 Mental Health Plan Development, Behavioral Programming

S5100 Adult Day Care 15 min units