



Iowa Department of Human Services

Terry E. Branstad
Governor

Kim Reynolds
Lt. Governor

Charles M. Palmer
Director

To: The Governor's Advisory Council on Brain Injuries
From: DHS, IME, LeAnn Moskowitz, Brain Injury Waiver Program Manager
Re: Brain Injury Waiver and General Medicaid Quarterly Update January 2014

I. Brain Injury Waiver Wait List as of 1/14/2013

Waiver	Total Slots	Currently Enrolled (ISIS)	In process	On Wait List	Next App. Date
Brain Injury (Oct-Sept)	1339	1264	170	879	5/1/2012 19 months
Reserved Capacity	30	1	5	0	N/A

I. BI Waiver Expenditures

Monthly Expenditure Comparison December 2012 and December 2013

Month to date comparison	Recip.	Claims	Units	Total Pmt	Avg. Unit Cost	Avg Elig Cost	Avg Unit Recip	Avg Cost Recip
12/31/2012	1,260	3,017	64,962	\$2,402,995.54	\$36.99	\$4.69	51.6	\$1,907.14
12/31/2013	1,247	2,779	198,432	\$2,174,291.45	\$10.96	\$4.26	159.1	\$1,743.62

Source Medicaid B-1 Monthly Report of Expenditures <http://publications.iowa.gov>

The increase in average per unit cost and per member cost can be attributed to the 2% rate increase HCBS waiver providers received January 1, 2013 and the 3% upper rate limit increase July 1, 2014. The difference in units can be attributed to the atypical code conversion where many hourly units were converted to 15 min units resulting in overall more units per recipient.

Year to Date Expenditure Comparison December 2012 and December 2013

SFY to date comparison	Recip.	Claims	Units	Total Pmt
12/31/2012	1,463	16,338	227,440	\$12,202,111.42
12/31/2013	1,394	16,398	979,264	\$14,925,755.18
Difference	10 >1%	8 1%	251,644 69 %	\$8966,409.29 12.27 %

http://www.dhs.state.ia.us/Partners/Reports/PeriodicReports/Medicaid_B1/MedicaidB1Current.html

II. BI Waiver Demographics

- See attached

III. BI Waiver Utilization for 9/30/2013

- See attached

IV. BI Waiver Level of Care

Persons who qualify for the BI waiver have sustained a traumatic brain injury and meet intermediate care facility, skilled nursing facility, or intermediate care facility for the intellectually disabled level of care.

SFY 2014	1 st Quarter	2nd Quarter	3rd Quarter	4th Quarter	Year to Date
Admission LOC	20				20
Approvals	16 80%				16 80%
Denials	4 20%				4 20%
Annual LOC	311				311
Approvals	309 99%				309 99%
Denials	2 1%				2 1%

V. BI Waiver Appeals

Members are provided appeal rights with every adverse decision

SFY 2014	1 st Quarter	2nd Quarter	3rd Quarter	4th Quarter	Year to Date
Number of Appeals	0	0			0

VI. BI Waiver Service Plan Authorization

Service plans for adult members on the Brain Injury waiver are completed when there is an increase in service unit amounts, service costs, or number of services to evaluate and confirm the medical need for the change in service level

SFY 2014	1 st Quarter	2nd Quarter	3rd Quarter	4th Quarter	Year to Date
Approvals	201 83%	134 79%			335 82%
Modifications	40 17%	35 21%			45 18%
Denials	0 0%	0 0%			0 0%

VII. BI Waiver News

Web Enabled Training:

IME is in the process of loading the training to the platform and will be issuing an IL soon notifying providers of the training being available.

BI Waiver 1915(c) application amendments (CMS Approval Received)

BI Waiver IAC Chapter 83 revisions Rules have been submitted to Rules Editor and are in process of being tweaked by the wordsmiths for public notice.

- Removal of the upper age limit – Members will be able to continue to receive services through the BI Waiver after age 65
- Removal of the cost of BI Waiver Case Management (W0815) from the monthly service cost cap of \$2,895.00 _ Members will have more dollars to spend on direct services
- Removal of the cost of Home and Vehicle Modifications from the monthly cap- Members will have more dollars to spend on direct services, Case Managers won't have to remember to encumber a portion of HVM costs each month

BI Waiver Level of Care Assessment Workgroup

- This group is not meeting at this time as the standardized assessment tool is part of the Balancing Incentive Payment Program (BIPP) RFP.

The Request for Proposal was released Tuesday January 14, 2013 and may be accessed at:

http://bidopportunities.iowa.gov/?pgname=viewrfp&rfp_id=9472.

Community Based Neurobehavioral Rehabilitation Services Task Force

- Currently two providers operating through an exception to policy; Community NeuroRehab in Des Moines and NeuroRestorative Iowa in Iowa City.
- The IME is currently working on the reimbursement methodology rules.

VIII. HCBS Communication from IME

<http://www.ime.state.ia.us/Providers/Bulletins/Bulletins2013.html>

INFORMATIONAL LETTER NO.1327

HCBS Incident Report Training

INFORMATIONAL LETTER NO.1336

HCBS Intellectual Disability (ID) and Brain Injury (BI) Waiver Supported Community Living (SCL) services approval process

[-Daily SCL D-4 Review Workflow and the Service Plan Review Workflow](#)

IX. General Information

• The Iowa Health and Wellness Plan

Beginning January 1, 2014, the Iowa Health and Wellness Plan will cover all Iowans age 19-64 with income up to and including 133 percent of the Federal Poverty Level.

<http://www.ime.state.ia.us/iowa-health-and-wellness-plan.html>

• The DHS Budget Submission for SFY 2014 and 2015 may be found here:

<http://www.dhs.state.ia.us/Partners/Reports/BudgetReports/Budgets.html>

• See the Medicaid Newsletter for all the latest news from the IME

<http://www.ime.state.ia.us/newsletter.html#search='Medicaid%20newsletter>

• DHS Initiatives

<http://www.ime.state.ia.us/Initiatives.html>

- Medicaid Value Management Data
- State Innovation Models (SIM)
- Balancing Incentive Payment Program (BIPP)
- Health Home
- Health Information Technology
- ICD-10
- Affordable Care Act

X. DHS Employment Initiatives

- DHS Employment Service Redesign workgroup has met since July. All Employment Service Redesign reports, documents, webinars and workgroup activities can be found at:

<http://www.dhs.state.ia.us/mhdd/2012/Employment.htm>



Iowa Department of Human Services

Terry E. Branstad
Governor

Kim Reynolds
Lt. Governor

Charles M. Palmer
Director

BI Waiver Services Q1 SFY 2014

Total Expenditures
\$ 7,746,164

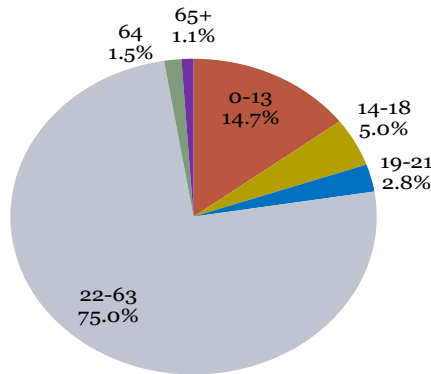
**Total Members
Served**
1,280

Total # Claims
7,652

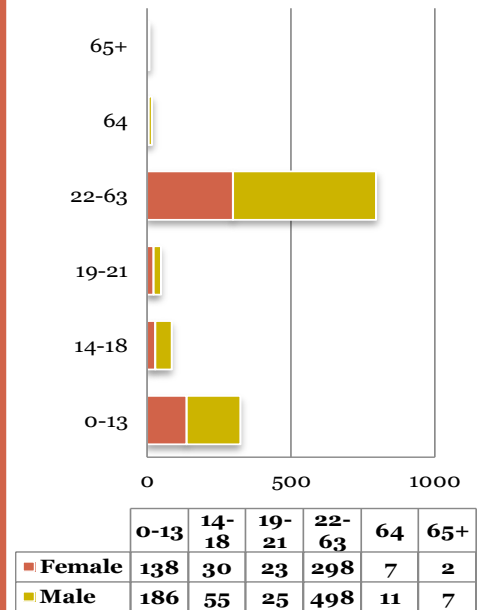
**Average
Expenditure /
Member**
\$ 6,052

**Average
Expenditure / Claim**
\$1,012

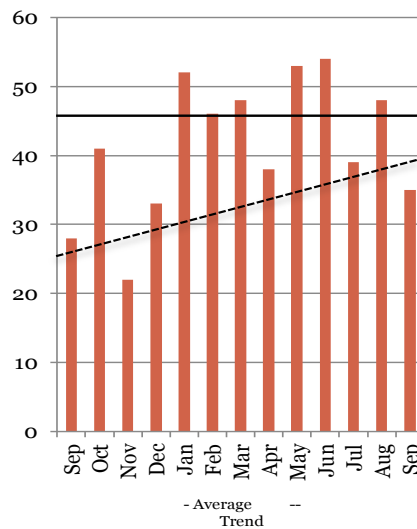
Expenditures by Age Group



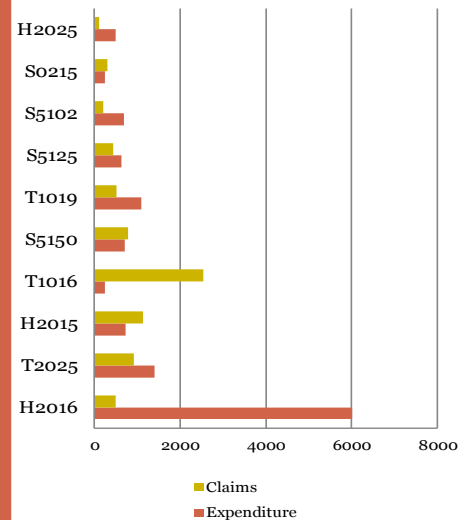
Age - Gender



Incidents - 13 mo.



Service Codes - Avg. Expenditure



Data Source: All Paid Claims January 7, 2014

Total consumers eligible for Brain Injury = 1281

Program	Services authorized as of 12/31/2013	# of Consumers
Brain Injury	H2015 Comp Community Support – home based hab or SCL	396
Brain Injury	H2016 Comp Comm Support – home based hab or SCL	152
Brain Injury	H2019 Therapeutic Bhv Srvs – enhanced job search	2
Brain Injury	H2021 Comm-Based Wrap-Around – family counseling	16
Brain Injury	H2023 Supported Employment - - enclave	27
Brain Injury	H2024 Supported Employment – employer development	1
Brain Injury	H2025 Support to Maintain Employment -	54
Brain Injury	S0215 Non-Emergency Transportation per Mile	116
Brain Injury	S5101 Adult Day Care Services – 1/2 Day	26
Brain Injury	S5102 Day Care Services- full day	68
Brain Injury	S5105 Adult Day Care- extended day	4
Brain Injury	S5125 Attendant Care Services – Agency non-skilled	137
Brain Injury	S5125 Attendant Care Services – Agency skilled	6
Brain Injury	S5150 Respite Care – specialized	36
Brain Injury	S5150 Respite Care – individual basic, home care agency	255
Brain Injury	S5150 Unskilled Respite Care – basic individual	64
Brain Injury	S5160 Emergency Response System, Install and Test	10
Brain Injury	S5161 Emergency Response System – Monthly Fee	148
Brain Injury	S5165 Home Modification	4
Brain Injury	T1002 RN Services – IMMT	2
Brain Injury	T1003 LPN/LVN Services-IMMT	3
Brain Injury	T1004 Nursing/Home Health Aide- IMMT, SCL & chld care	3
Brain Injury	T1004 Nursing/Home Health Aide- IMMT, HH agency	2
Brain Injury	T1005 Respite Care Services – group	61
Brain Injury	T1005 Respite Care Services – facility	3
Brain Injury	T1016 Case Management	892
Brain Injury	T1019 Personal Care Services – CDAC individual non-skilled	135
Brain Injury	T1019 Personal Care Services – CDAC individual skilled	9
Brain Injury	T2003 Non-Emergency Transportation per Trip (One Way)	99
Brain Injury	T2014 Habilitation, Prevocational per Diem	28
Brain Injury	T2015 Habilitation, Prevocational per Hour	28
Brain Injury	T2018 Hab, Supp Emp- - job development	4
Brain Injury	T2025 Waiver Services NOS- FMS payment	267
Brain Injury	T2029 Specialized Medical Equipment NOS	7
Brain Injury	T2036 Therapy Camping Overnight	2
Brain Injury	T2037 Therapy Camping per Day	2
Brain Injury	T2039 Vehicle Modification	1
Brain Injury	W0815 Case Management BI Waiver	2
Brain Injury	W1010 Consumer Choices Option	2
Brain Injury	W1421 Supported Community Living (Hourly)	1
Brain Injury	W5019 Supported Employment – Job Development	1

