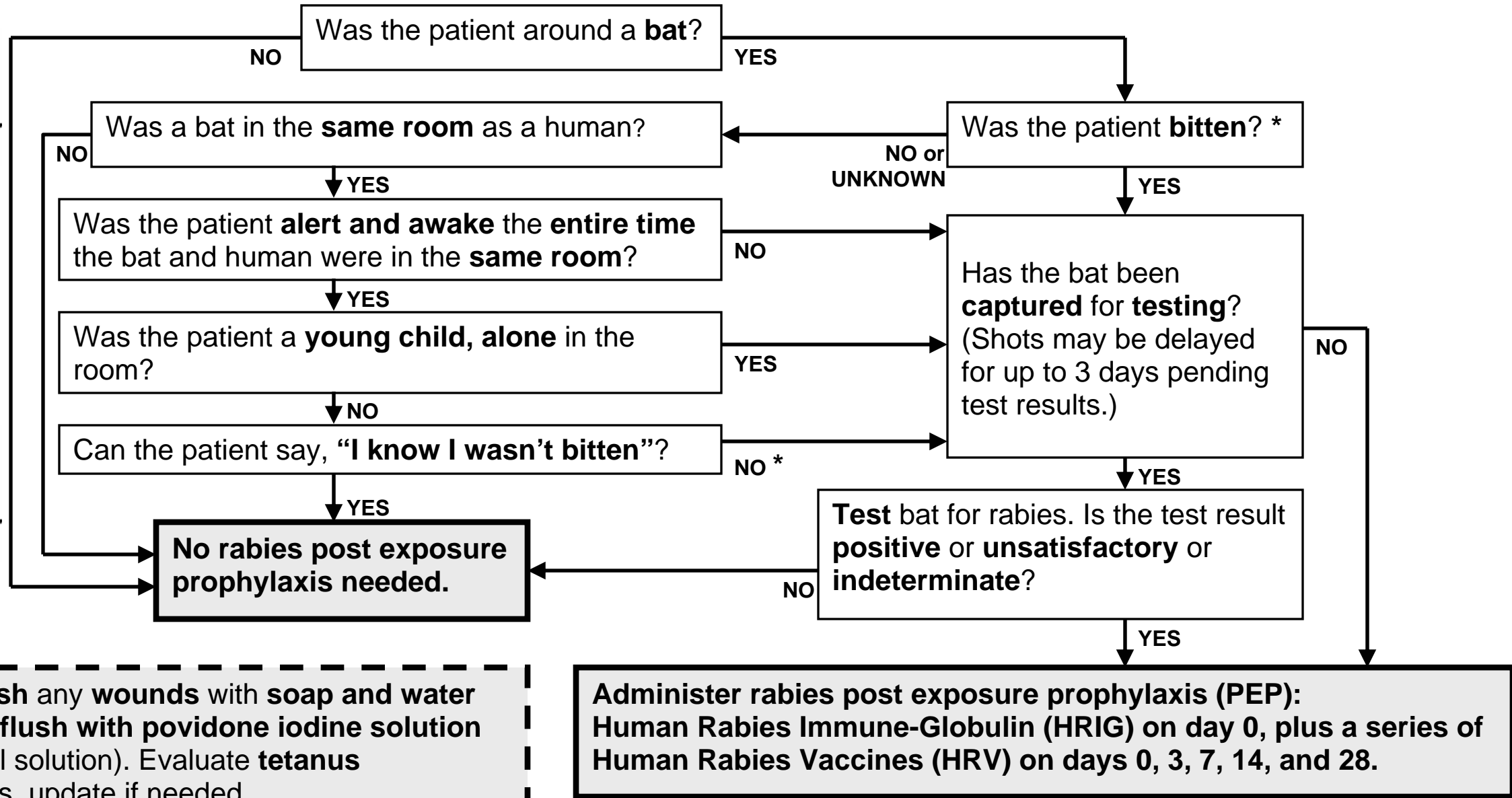


Rabies Exposure Management for Bat-related Incidents (FAQ's on reverse)



* Thoroughly wash any wounds with soap and water and, if available, flush with povidone iodine solution (or other virucidal solution). Evaluate tetanus vaccination status, update if needed.

Iowa Department of Public Health, Center for Acute Disease Epidemiology (CADE)
 Business hours consultations: 800-362-2736 After hours consultations: 515-323-4360

www.idph.state.ia.us/adper/rabies.asp

RABIES EXPOSURE MANAGEMENT FREQUENTLY ASKED QUESTIONS (FAQs)

What constitutes an exposure?

- There was a bite from an animal to a human.
- There was saliva contact from an animal to a human's open cut or mucous membrane.
- A bat is found in the same room with a sleeping person, an unattended child, an intoxicated person, or anyone unable to confirm that they were NOT bitten. Finding a bat OUTSIDE of the room the person was in (i.e., in a hallway or on the other side of an open door) is NOT considered an exposure.

There was a bat in my house. Should my family get rabies post exposure prophylaxis?

Family members need prophylaxis if EXPOSED (see above) AND

- the bat was tested and found to be rabies positive, indeterminate, or unsatisfactory to test, or
- the bat was not caught and therefore cannot be tested.

I can't exclude bats from my house, should I get pre exposure prophylaxis?

- If bats are found routinely inside the home and the house cannot be "bat proofed", consult your health care provider to consider pre exposure vaccination. Patients who have already received a rabies vaccine series will still need two human rabies vaccines (day 0 and 3) after subsequent rabies exposures.

What are the rules for animal rabies quarantine in my area?

- Cities and counties enforce animal rabies quarantine rules and regulations. Rules and regulations can differ from one area to another. The most accurate information can be obtained from your city animal control department or your local public health agency.

Where can I find recommendations for animal rabies exposure, quarantine, and prophylaxis?

- www.idph.state.ia.us/adper/common/pdf/2007_rabies_compendium.pdf

Where can I get more information on human rabies prevention?

- www.idph.state.ia.us/idph_universalhelp/main.aspx?system=IdphEpiManual

Do all animals that bite humans need to be tested for rabies?

- If the biting animal is a rodent (rat, mouse, squirrel, guinea pig, chipmunk or gerbil), a marsupial (opossum) or a lagomorph (rabbit), we usually do not recommend testing because the possibility of rabies is extremely low. However, if the one of these animals exhibited unusual behavior, if the bite was unprovoked, contact CADE, (800) 362-2736, [for consultation on the need for testing and post exposure prophylaxis.](#)

How do I get an animal tested for rabies?

If an animal (except rodent, marsupial or lagomorph – see above) exposure has occurred, the animal should be tested for rabies at one of the following laboratories:

University Hygienic Laboratory (UHL)

Address	102 Oakdale Campus H101 OH Oakdale Campus, Iowa City, IA 52242 800-421-4692 (call before departure)
Web instructions	www.uhl.uiowa.edu/kitsquotesforms/rabies_slip.pdf
Submissions	Submit the whole (dead) animal if it is bat-sized or mouse-sized. Submit the HEAD ONLY if animal is larger than a bat/mouse (should be removed by veterinarian). Live bats are accepted when labeled "LIVE BAT."
Results	UHL Rabies Test Request Form is required (Available from the UHL Web site). Results are reported ONLY to the physician or veterinarian listed on submission form. Testing is performed 7 days/week. Results (except negatives) phoned to physician/veterinarian.
Packaging	Double bag the specimen to prevent leaking. Package the specimen with ice or refrigerant packs. DO NOT FREEZE THE SPECIMEN. If bat is alive, label the package "LIVE BAT."
Transport	Private carrier (patient, relative, or designee) drives the sample and form to UHL. Overnight commercial carrier (Fed EX preferred) transports sample (dead animals only) and form.
After hours drop off	University of Iowa Hospitals and Clinics (UIHC) Emergency Room will receive after hours samples. Remain in ER until specimen is properly received by ER staff.
Charge for testing?	There is no charge for testing if there has been a human exposure (exposure definition above).

If a person previously vaccinated with Human Rabies Vaccine is exposed to a rabid animal, what is required for post exposure prophylaxis?

- Persons with previous rabies vaccination (completed series of the three vaccine pre exposure prophylaxis or the series of five vaccines and Human Rabies Immune Globulin post exposure prophylaxis) (using Human Diploid Cell Vaccine, Rabies Vaccine Adsorbed, or Purified Chick Embryo Vaccines) should receive two doses of rabies vaccine on days 0 and 3. The person does not need Human Rabies Immune Globulin.
- Persons previously vaccinated with a rabies vaccination regimen NOT LISTED ABOVE but who have a documented rabies antibody titer (corresponding to complete neutralization dilution of 1:5 or greater by RFFIT testing) should receive two doses of rabies vaccine on days 0 and 3. The person does not need Human Rabies Immune Globulin. Full post exposure prophylaxis is needed for persons with inadequate documentation of titer.

What if a patient can't adhere to the rabies post exposure vaccination schedule?

- The effectiveness of the rabies vaccines may be compromised if the recommended vaccination schedule is not followed. EVERY EFFORT should be made to administer the vaccines in accordance with the recommended schedule. If a rabies vaccine has been missed, the schedule should resume with the dose missed (i.e., If day 7 vaccine is missed (3rd dose), administer a vaccine today and call this vaccination the "day 7" (3rd dose) vaccination. The next vaccine (4th dose) would be given in 7 more days on "day 14", and the 5th dose in another 14 days on "day 28", in keeping with the remainder of the 0, 3, 7, 14, 28 day schedule).

Where can I find Human Rabies Immune Globulin (HRIG) and Human Rabies Vaccine (HRV)?

- Hospitals, especially the larger hospitals, across Iowa carry Human Rabies Immune Globulin and Human Rabies Vaccine. Regional Rabies Vaccine/Globulin Centers can be found in the IDPH Epi Manual and at www.idph.state.ia.us/idph_universalhelp/main.aspx?system=IdphEpiManual. If you need to order Human Rabies Immune Globulin (HRIG) or Human Rabies Vaccine (HRV), contact the following manufacturers:

Imogam Rabies (HRIG)	Hyperab (HRIG)	Imovax (HRV)	RabAvert (HRV)
sanofi pasteur 800-822-2463	Talecris 800-243-4153	sanofi pasteur <i>human diploid cell vaccine</i> 800-822-2463	Novartis <i>purified chick embryo cell culture</i> 888-244-7668

Iowa State University Veterinary Diagnostic Laboratory (VDL)

Address	600 S. 16 th Street Ames, IA 50011 515-294-4808 (call before departure)
Web instructions	www.vetmed.iastate.edu/departments/vdpam/vdl.aspx?id=2122#rabies_specimens
Submissions	Whole (dead) animal submissions are preferred. Heads of larger animals are accepted (removed by veterinarian, removal instructions on VDL Web site). Occasional live animal submissions are accepted with prior approval. There is a fee for euthanasia.
Results	VDL Rabies Examination Submission Form is required. (Available from the VDL Web site.) Note if a human exposure has occurred for prompt testing. Results are reported to the submitter listed on the submission form. Testing performed M-F (after-hrs testing on approval, only if human exposure). Results phoned to submitter.
Packaging	Use a leak-proof container with refrigerant packs. Package the specimen with refrigerant packs. DO NOT FREEZE THE SPECIMEN. Label the package "RABIES SUSPECT."
Transport	Private carrier (patient, relative, or designee) drives the sample and form to VDL or An overnight commercial carrier (FedEX, UPS, etc.) transports the sample and form to VDL.
After hours drop off	Call after hours staff at 515-290-1969 prior to submission for proper drop-off instructions. Dead animals are preferred. There is a fee for euthanasia.
Charge for testing?	Yes. Please note if human exposure has occurred to ensure prompt testing.